

Electrical Drawings

Name of Work: Construction of Changing Room

Name of College: Gedu College of Business Studies, Gedu

Location: Gedu, Chukha

ALL DIMENSIONS ARE IN MM

ISSUED FOR:								PROJECT: RGoB FUNDED PROJECT	DATE: January 2019	DRAWING NO.: 00	RIV 0
1	APPROVAL			Sangay Dorji Engineer, RUB				DRAWING TITLE.: As stated			
2	RECORD										
3	INFORMATION										
4	FOR CONSTRUCTION										
5	REVISION		DATE	MODIFICATION	DESIGNED/DRAWN	CHECKED	APPROVED			SCALE: NTS	

LEGEND

- 1) All the light points to be wired with 2.5sqmm($\frac{3}{20}$), PVC insulated copper conductor cable, 1.1KVG in surface/pvc casing capping Pipe 25mm–38mm.
- 2) All the wiring of power points to be wired with 4sqmm($\frac{7}{22}$) for 16A socket outlet, PVC insulated copper conductor cable, 1.1KVG in surface
- 3) All power points is to be fixed at 0.3mtr. above finish floor level except in bathroom 1.5mtr. and 6A with control switch board.
- 4) All lighting switch boards should be fixed at 1.6mtr. above the finished floor level.
- 5) Minimum size of PVC casing capping pipe 25mm–38mm.

NOTE:

- 1) For Earthing refer standard drawing attached.
- 2) No. 14SWG PVC wire is used for earth continuity.
- 3) GI strip 25mmX4mm

TEST RESULT:

- 1) Polarity test:–All the live conductors must be connected through switch only.
- 2) Insulation test:–Minimum test result should not be less than 1Mega–Ohms.
- 3) Earth continuity test:–Low voltage lamp should satisfy the whole insulation.
- 4) Earth test:–Test result should within 8 Ohms.

ALL DIMENSIONS ARE IN MI

ISSUED FOR:							PROJECT: RGoB FUNDED PROJECT	DATE:	DRAWING NO.: 01	RIV 0
1	APPROVAL									
2	RECORD									
3	INFORMATION									
4	FOR CONSTRUCTION									
5	REVISION		DATE	MODIFICATION	DESIGNED/DRAWN	CHECKED	APPROVED		SCALE: NTS	

Sangay Dorji
Engineer, RUB

©2000 OpenOffice Project/RUBDOCOpen.jpg

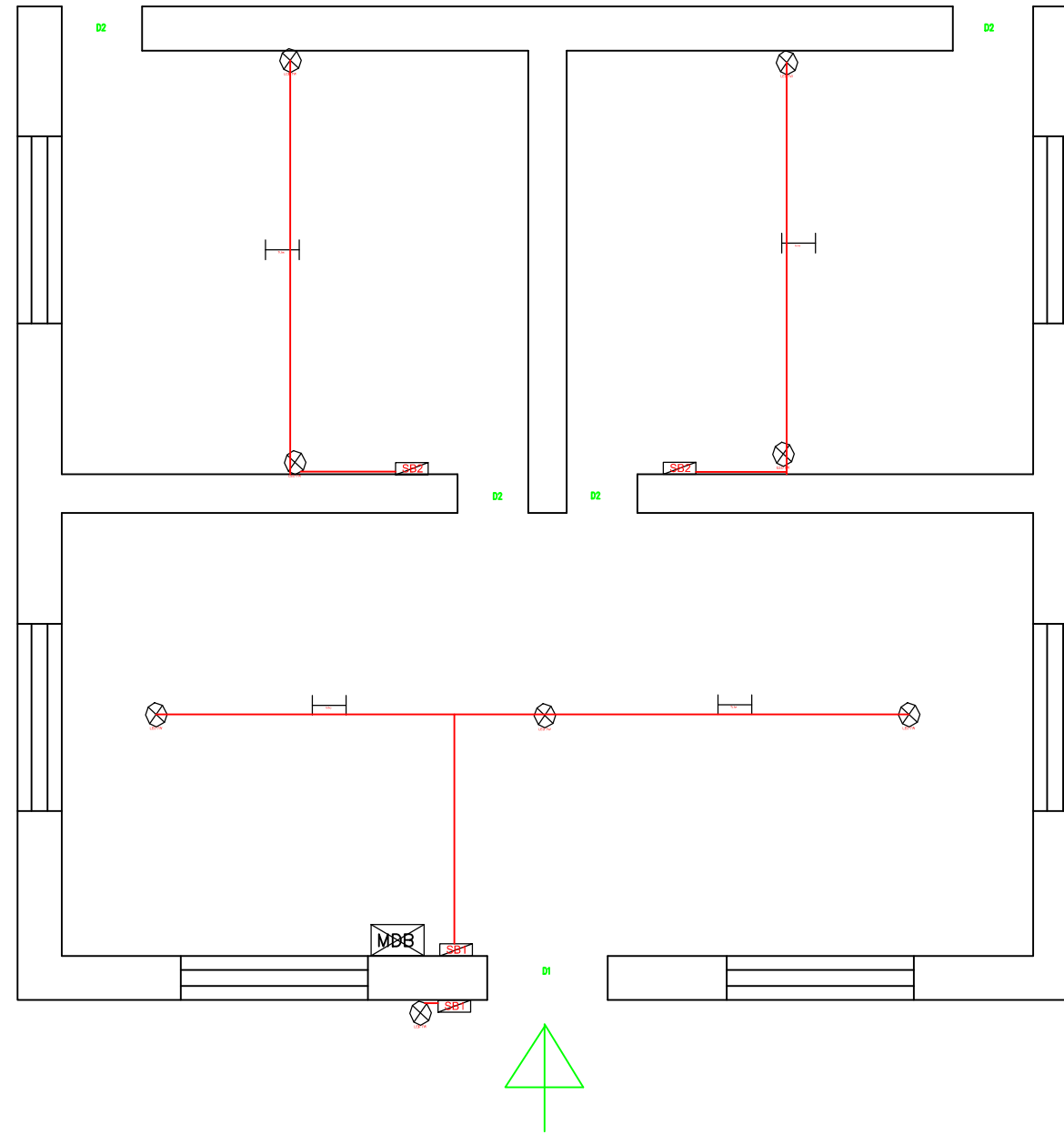
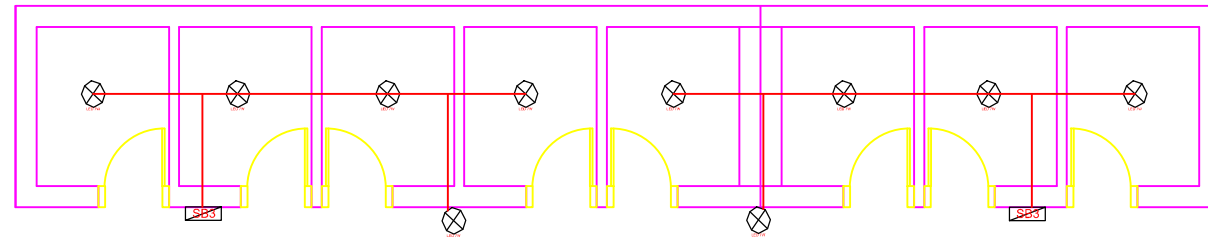
DRAWING TITLE.:
As stated

MAKE SURE THAT:

- 1) Maximum of two power points are connected to one 16 Amps MCB.
- 2) All light circuit are connected from 6 Amps MCB.
- 3) All sub mains are wired of 16sqmm. cable.
- 4) All light sub circuits are wired of 2.5sqmm. cable.
- 5) All power sub circuit are wired of 4sqmm. cable..
- 6) All earth wires from DB to power point are of 1.5sqmm, single strand, copper wire (green).
- 8) All sub main earthing to be looped with 4sqmm, copper cable, single strand (green).

ALL DIMENSIONS ARE IN MM

ISSUED FOR:							PROJECT: RGoB FUNDED PROJECT	DATE:	DRAWING NO.: 02	RIV 0
1	APPROVAL			Sangay Dorji Engineer, RUB			DRAWING TITLE.: As stated		SCALE: NTS	
2	RECORD									
3	INFORMATION									
4	FOR CONSTRUCTION									
5	REVISION	DATE	MODIFICATION	DESIGNED/DRAWN	CHECKED	APPROVED				

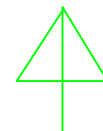
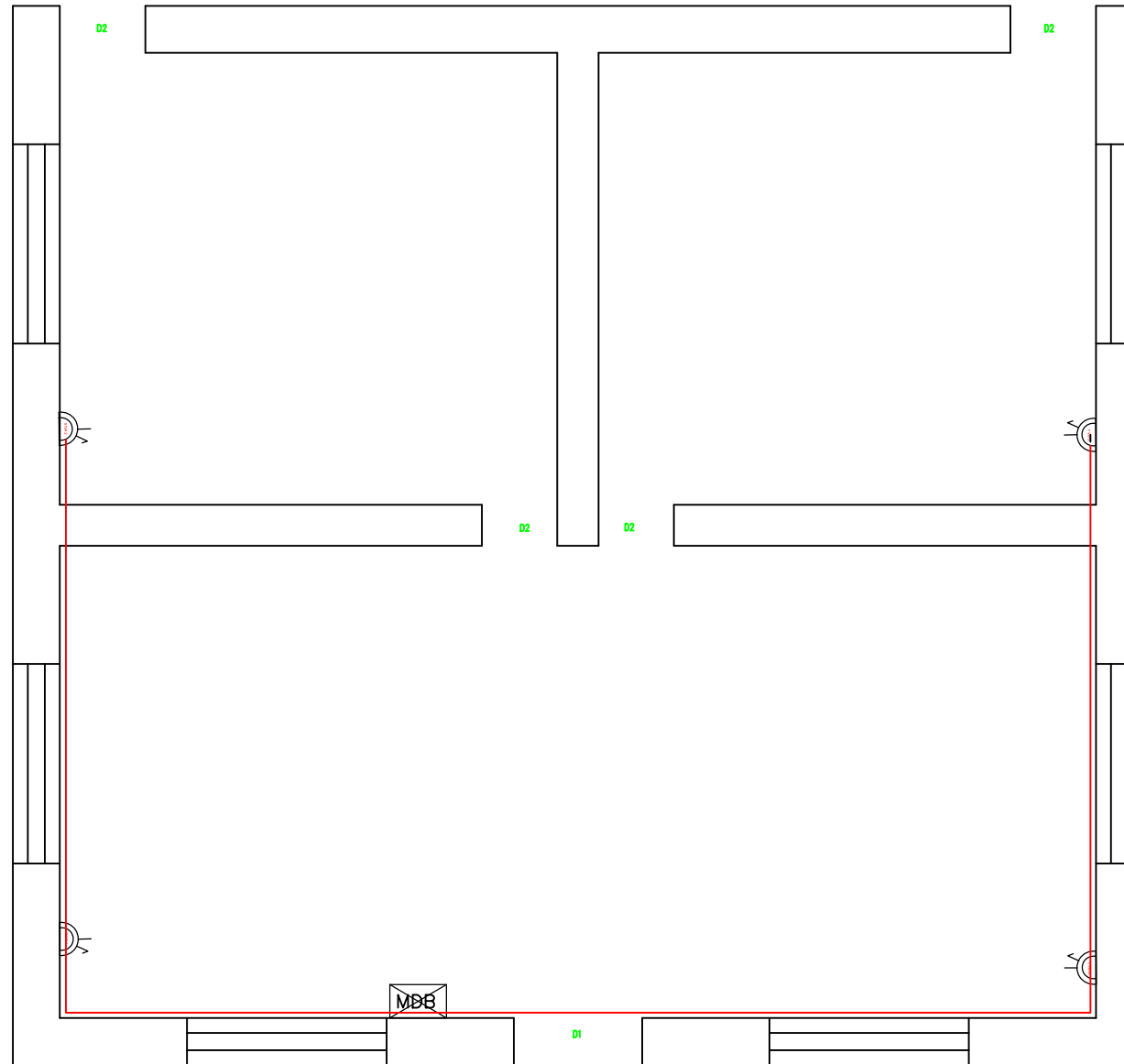
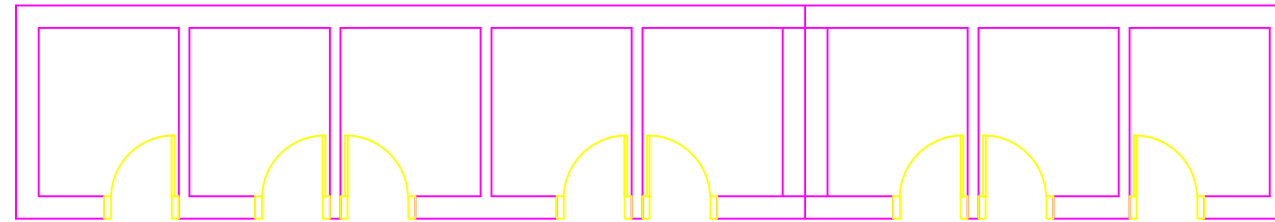


MAIN ENTRANCE

TITLE: LIGHTING POINTS POSITION

ALL DIMENSIONS ARE IN MI

ISSUED FOR:				Sangay Dorji Engineer, RUB	DESIGNED/DRAWN	CHECKED	APPROVED	PROJECT: RGoB FUNDED PROJECT	DATE:	DRAWING NO.: 03	RIV 0
1	APPROVAL										
2	RECORD										
3	INFORMATION										
4	FOR CONSTRUCTION										
5	REVISION	DATE	MODIFICATION								
								DRAWING TITLE.: As stated		SCALE: NTS	



MAIN ENTRANCE

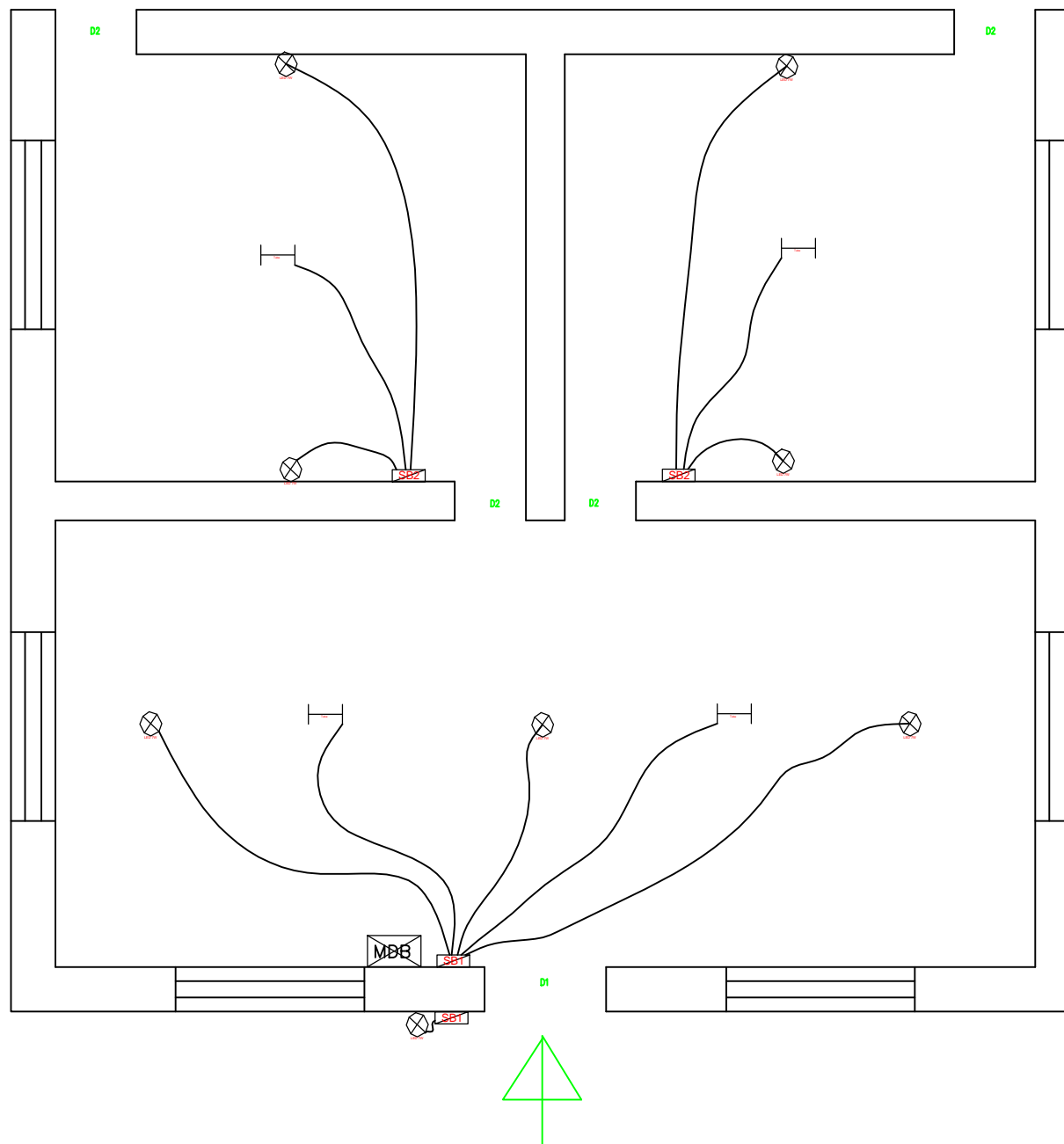
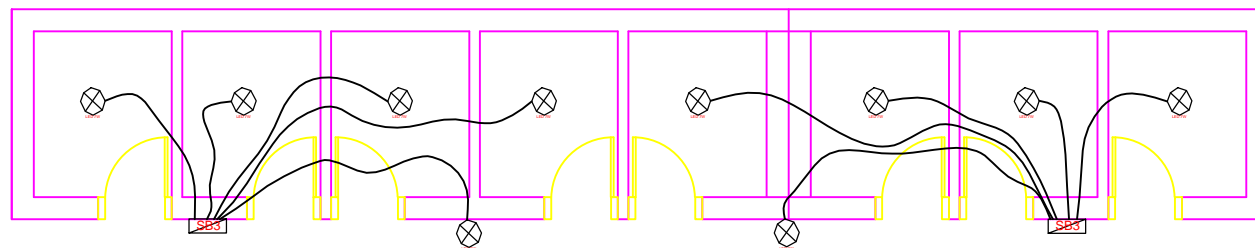
TITLE: POWER POINTS POSITION

ALL DIMENSIONS ARE IN MI

ISSUED FOR:								PROJECT: RGoB FUNDED PROJECT	DATE:	DRAWING NO.: 04	RIV 0
1	APPROVAL										
2	RECORD										
3	INFORMATION										
4	FOR CONSTRUCTION										
5	REVISION		DATE	MODIFICATION	DESIGNED/DRAWN	CHECKED	APPROVED	DRAWING TITLE.: As stated		SCALE: NTS	

Sangay Dorji
Engineer, RUB

© 1000-Dynaliner Project\121\1000000\1000000.dwg



MAIN ENTRANCE

TITLE: LIGHT CIRCUIT

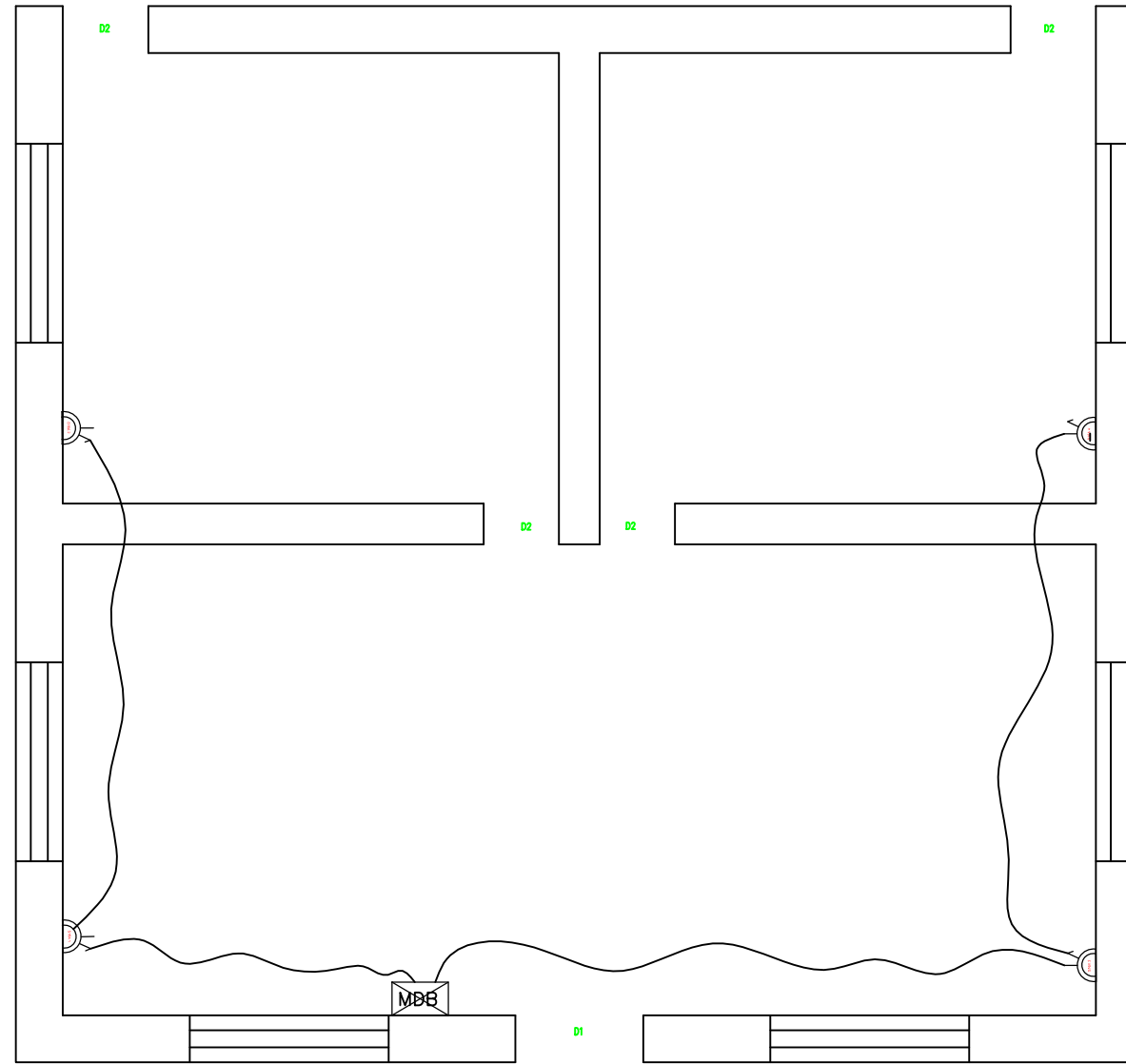
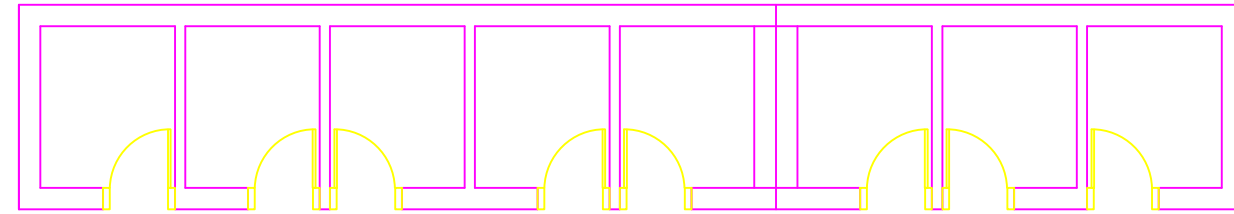
ALL DIMENSIONS ARE IN MI

ISSUED FOR:							PROJECT: RGoB FUNDED PROJECT	DATE:	DRAWING NO.: 05	RIV 0
1	APPROVAL									
2	RECORD									
3	INFORMATION									
4	FOR CONSTRUCTION									
5	REVISION		DATE	MODIFICATION	DESIGNED/DRAWN	CHECKED	APPROVED			SCALE: NTS

Sangay Dorji
Engineer, RUB

D:\000-Dymaster-Project\TRUB000\Chap.jpg

DRAWING TITLE.:
As stated



MAIN ENTRANCE

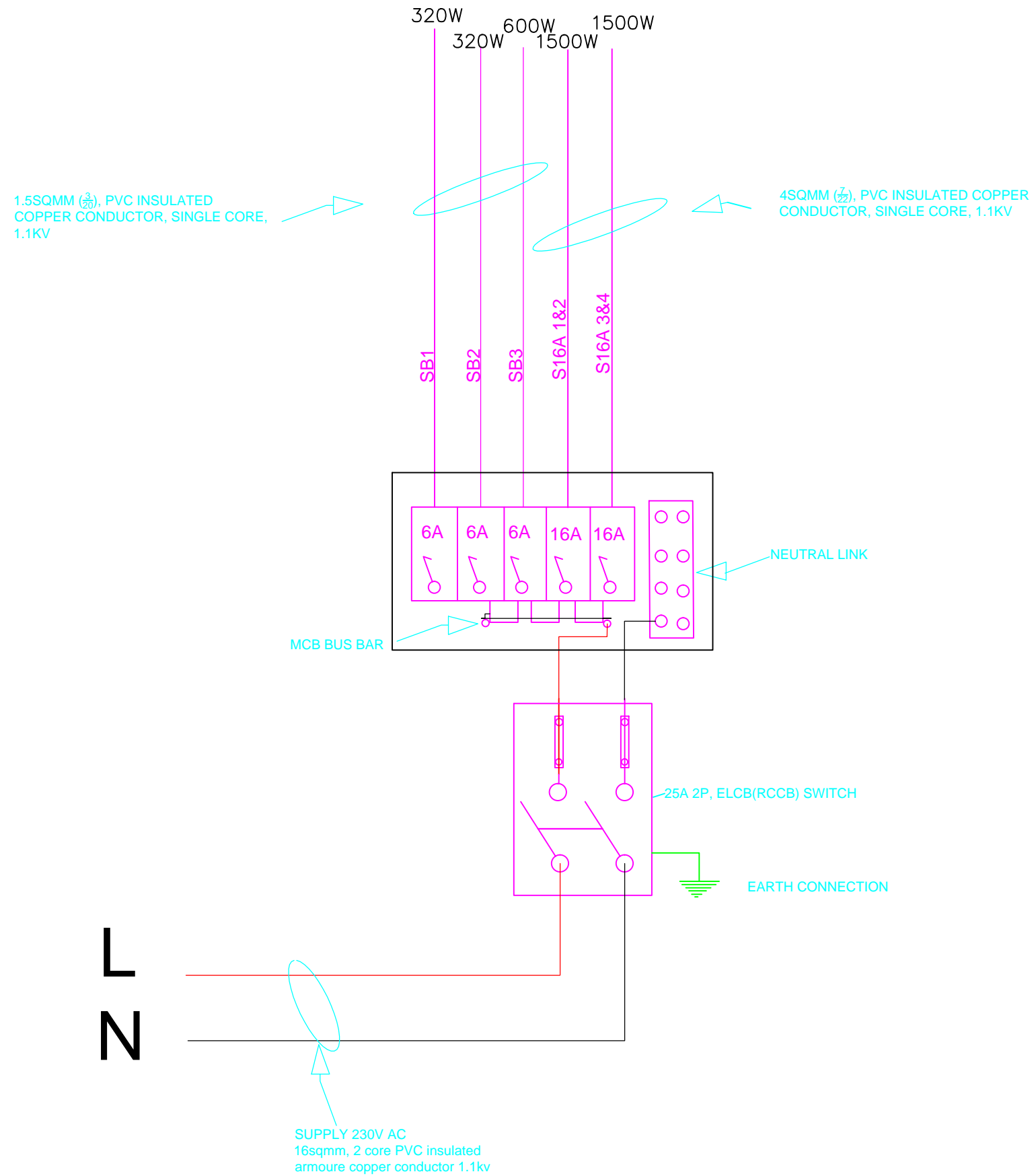
TITLE: CONNECTION FOR MDB TO POWER POINT

ALL DIMENSIONS ARE IN M

ISSUED FOR:								PROJECT: RGoB FUNDED PROJECT	DATE:	DRAWING NO.: 06	RIV 0
1	APPROVAL										
2	RECORD										
3	INFORMATION										
4	FOR CONSTRUCTION										
5	REVISION		DATE	MODIFICATION	DESIGNED/DRAWN	CHECKED	APPROVED	DRAWING TITLE.: As stated		SCALE: NTS	

Sangay Dorji
Engineer, RUB

© 2000 Dynastar Project/11/RUB/0003/06p.dwg

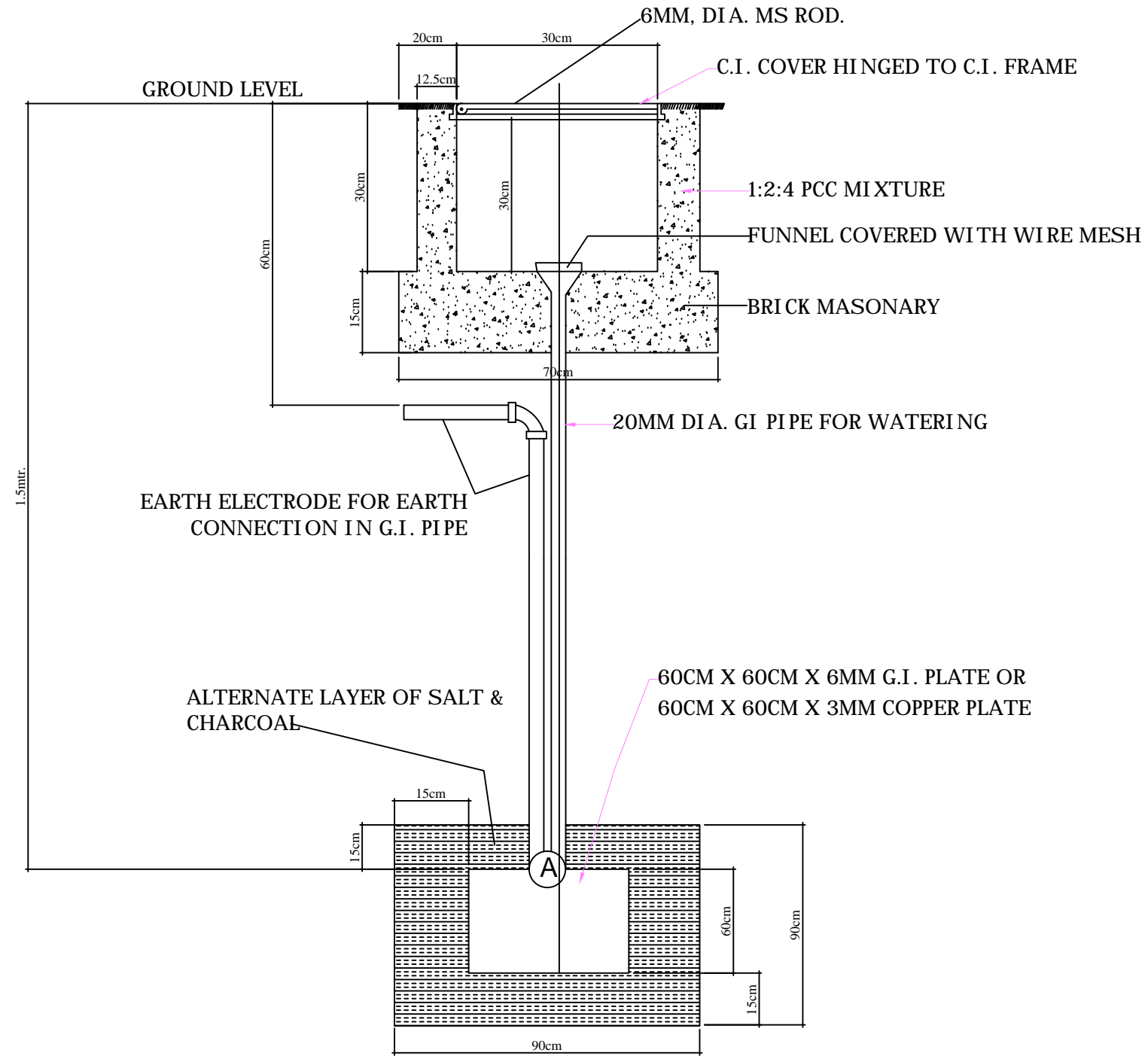


TITLE: WIRING DIAGRAM FOR CHANGING ROOM

ALL DIMENSIONS ARE IN MI

ISSUED FOR:				Sangay Dorji Engineer, RUB	DESIGNED/DRAWN	CHECKED	APPROVED	PROJECT:	DATE:	DRAWING NO.: 07	RIV
1	APPROVAL							RGoB FUNDED PROJECT			0
2	RECORD										
3	INFORMATION										
4	FOR CONSTRUCTION										
5	REVISION	DATE	MODIFICATION				DRAWING TITLE.: As stated	SCALE: NTS			

PLATE EARTHING DETAILS



TITLE : STANDARD EARTHING DRAWING

ALL DIMENSIONS ARE IN MM

ISSUED FOR:							PROJECT: RGoB FUNDED PROJECT	DATE:	DRAWING NO.: 08	RIV 0
1 APPROVAL										
2 RECORD										
3 INFORMATION										
4 FOR CONSTRUCTION										
5 REVISION		DATE	MODIFICATION	DESIGNED/DRAWN	CHECKED	APPROVED	DRAWING TITLE.: As stated			SCALE: NTS

Sangay Dorji
Engineer, RUB

© 2008 Dymation Project11RUB0001.kgm.jpg